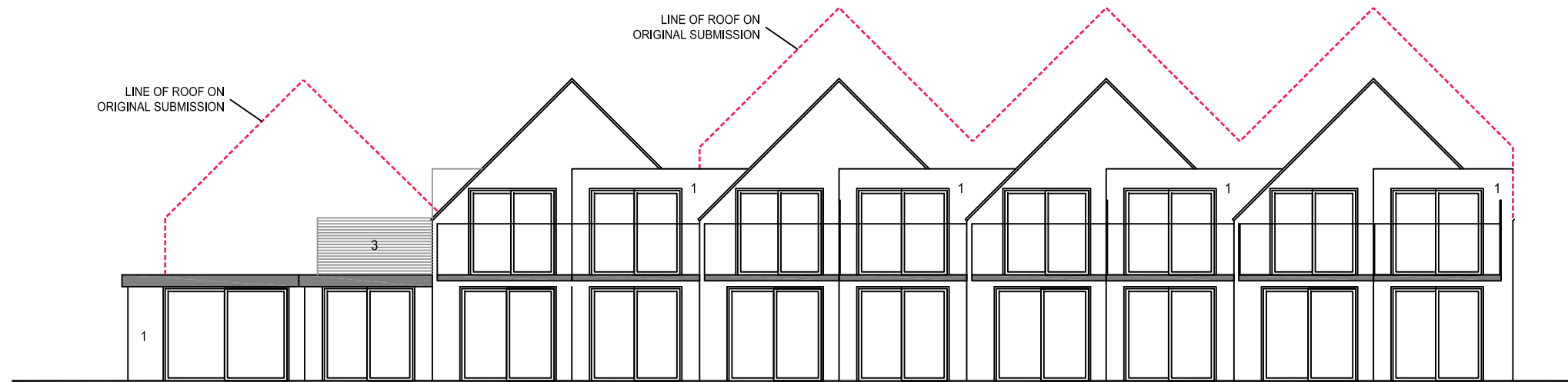


NORTH EAST ELEVATION
PROPOSED

MAIN AMENDMENTS:
REMOVE SECOND FLOOR ACCOMMODATION,
REMOVE FIRST FLOOR ACCOMMODATION TO
SOUTH WEST END
REDUCE HEIGHT OVERALL BY 1.9m



SOUTH WEST ELEVATION
PROPOSED

This page is intentionally left blank